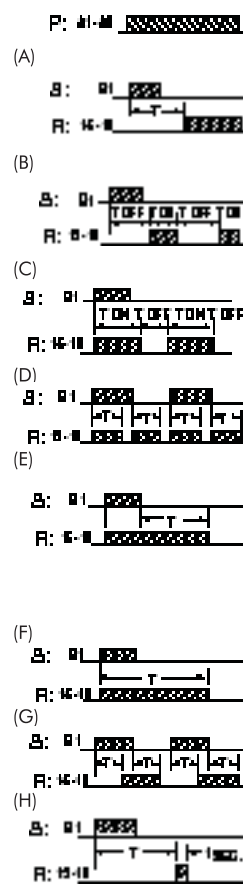


FEATURES

- 8 mode multifunction facility for complete flexibility and wide range applications.
- Timing from 0.1 second to 999 hours.
- Selectable up/down counting modes to show elapsed/remaining time.
- 3 digit LC display for preset time and run time.
- Wide operating range for supply voltage.
- Easy front settings.
- Tamper-proof with key lock function.
- Conforms to IEC standards for EMI/EMC, with CE mark.
- Compact and standard size of 1 module space.
- Optional, base or DIN 35 Rail, mounting.

TECHNICAL SPECIFICATIONS

Cat No.	: VODDT0
Nominal Voltage (Ur)	: 110-240V AC or 24V AC/DC (selectable)
Operating Range	: -15% to +10% of Ur
Frequency	: 50/60 Hz
Modes	: On delay, Cyclic off/on, Cyclic on/off, Signal on/off, Signal off Delay, Interval, Signal off/on, One shot output.
Timing	: h:m m:s hr min sec 9:59 9:59 999 999 999 99.9 99.9 99.9
Repeat Accuracy	: ± 50 ms
Max. Reset Time	: 100 msec
Max. Switching Rate, at max./min. load	: 360/1000 per hour
Output Contacts	: 1 C/O, AgNi 90/10 (Cadmium free)
Output Contact Rating (resistive)	: 5A @ 240 V AC / 28 V DC
Electrical Life	: 1×10^6 operations
Mechanical Life	: 5×10^6 operations
Power Consumption	: 15 VA
Dimension (WxDxH)	: 17.5 x 76 x 89 (mm)
Terminal Capacity	: 2.5 mm ² max.
Mounting	: Base/DIN rail (Sym.35mm)
Weight	: 85 gms approx (unpacked)



- Power Supply Pulse
1. On Delay : The Timer Starts when both Power (P) & Signal (S) are applied. The relay is energized at the end of Preset Time (T) & remains On till Power is removed.
 2. Cyclic Off/On (Off Start [Sym, Asym]) : T O N and TOFF can be same or different. The relay keeps on changing its status till the power is removed
 3. Cyclic On/Off (On Start [Sym, Asym]) : This function is quite similar to the function (b) but initially the relay is on for period TON after the power is applied.
 4. Signal On/Off : The output relay is turned on for Preset Time (T) whenever the Signal (S) is applied or removed.
 5. Signal Off Delay : Output relay becomes on when Signal (S) is applied. Timer duration (T) starts when Signal (S) is removed. At the end of Timer duration (T) the output relay goes off. Signal (S), if applied during the Timer duration (T) will re-trigger the Timer and the total duration will be extended.
 6. Interval : When Signal (S) is applied, the Timer starts and the output relay is energized. The output relay becomes off at the end of Timer Duration (T).
 7. Signal Off/On : When Signal (S) is applied or removed, the relay changes its state after Timer duration (T).
 8. One shot Output : When Signal (S) is applied, the Timer Duration (T) starts. At the end of Timer Duration (T), the relay gets energized for approximately 1 Sec.

Notes : P = Power, S = Signal, R = Relay.

