

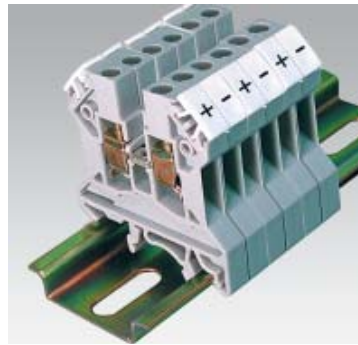
Thermocouple Terminal Blocks

Thermocouple terminal blocks are offered for accurate measurement of temperature. The sensing part of terminal block has the same material (DIN 43713 & DIN 43714) as for compensating cables used in temperature measurement (upto 200° C) fulfilling the accuracy stated in DIN EN 60584.

The terminal blocks are marked for the respective thermocouple material used for the current bars, which enables easy identification for wiring.







- 'K' type - Chromel (Ni/Cr) + Alumel (Ni/Al) -
- 'J' type - Iron (Fe) + Constantan (Cu/Ni) -
- 'T' type - Copper (Cu) + Constantan (Cu/Ni) -

Please refer for other types of thermocouple terminal blocks.



TH2.5U



Terminal Pitch		10 mm		
Height x Width		45 x 43 mm		
Connection Possibility	Stranded Wire Solid Wire	0.5 to 2.5 sq.mm 0.5 to 4 sq.mm		
Stripping Length		9 mm		
Insulation Material		Polyamide 6.6		
Type of Connection		4 screw clamps connection		
Approvals		CSA Standard	IEC Standard	UL Standard
Rated Cross Section		24-14 AWG	0.5-2.5 sq.mm	24-14 AWG
Voltage Rating		300 V	750 V	300 V
Current Rating		10 A	10 A	10 A
Torque		7 lb-in	0.5 Nm	7 lb-in
		Type Cat No.	Std. Packing in Nos.	Wt Per unit in Grams
Terminal Block		TH2.5UK TH2.5UJ TH2.5UT	50 50 50	12 12 12
End Plate		EPSCRW2.5U/4U	50	1.7
Partition Plate		PPSCRW2.5U/4U	50	2.3
Separator Plate		SPSCRW2.5U/4U	100	0.1
Mounting Rail		DIN 32G DIN 35U DIN 35-15U	50 M 50 M 50 M	750 360 700
End Clamp		ES2N ES3N	50 50	7.4 4.5
Marking Tags		KM/5	100	0.07