

Totalizers mechanic

Meter counters PTB approved

Display 5 digits, manual reset by lever

M 410.A



M 410.A - PTB Meter counter

Features

- PTB Meter counter, large
- Adding
- Display 5-digits
- Reset by lever

Technical data - mechanical design

Function	PTB Meter counter
Display	White numbers on black Decimal digit with scale
Number of digits	5-digits
Digit height	7 mm
Reset	Manual by reset lever. Do not let snap or make jerky movements.
PTB approval	1.5 / 87.05
Count mode	Adding in a rotational direction to be indicated, subtracting in reverse direction. 2 revs. = 10 counts
Drive shaft	Both sides, $\varnothing 7$ mm
Measuring speed	<60 m/min
Measuring accuracy	1 cm
Measuring range	9999.99 m/cm
Operating temperature	0...+60 °C
Housing type	Surface mount housing with mounting plate
Housing colour	Grey
Dimensions W x H x L	106 x 64 x 45 mm
Dimensions mounting plate	120 x 64 mm
Mounting	Base plate, 4 mounting holes
Weight approx.	380 g
Materials	Housing: Hostaform POM, grey Base plate: steel zinc-coated

Description

Meter counter M 410.A is calibrated by the German Physical-Technical Institute (PTB) and approved for calibrated measuring systems. However, our customers must apply for calibration of the whole measuring system at the corresponding calibration authorities.

Totalizers mechanic

Meter counters PTB approved

Display 5 digits, manual reset by lever

M 410.A

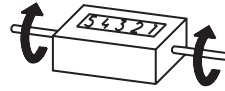
Part number

M 410.A0

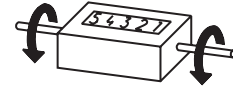
Display / direction of rotation

- 1 5-digits 9999.95 m, 2 revolutions
= 10 digits / direction I
- 2 5-digits 9999.95 m, 2 revolutions
= 10 digits / direction II

Direction of strokes and rotation



Away from user
Sense of rotation I



Towards user
Sense of rotation II

Accessories

Measuring wheels

MR512.07A Circumf. 50 cm, knurled aluminium

MR542.07D Circumf. 50 cm, smooth Hytrel TPE-E

MR552.07A Circumf. 50 cm, smooth Vulkollan PUR

MR562.07A Circumf. 50 cm, knopped rubber NBR Nitril

MR592.07D Circumf. 50 cm, grooved Hytrel TPE-E

Dimensions

