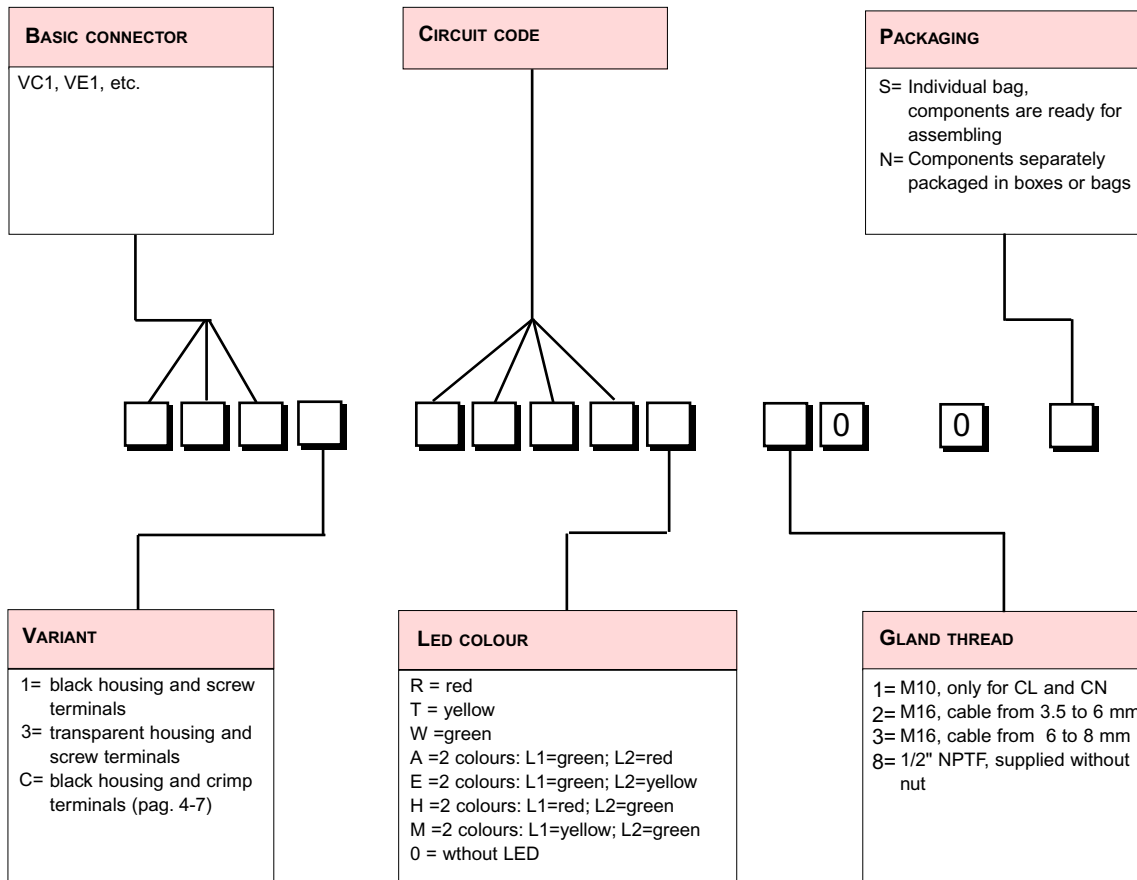


# ELECTROVALVE CONNECTORS EN 175301-803 (EX DIN 43650) WITH SCREW OR CRIMP TERMINALS

## Code formation chart









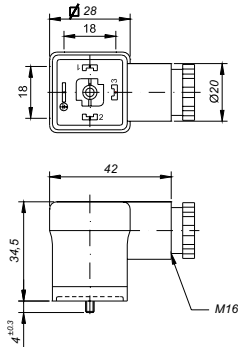




# ELECTROVALVE CONNECTORS EN175301-803 (EX DIN 43650)

## STYLE A AND B - WITH CRIMP TERMINALS

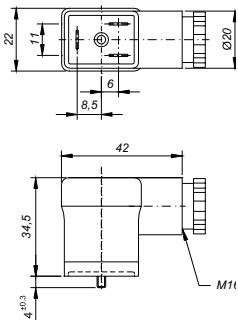
### VC1C Style A



Circuit Code		00A0
Poles		-
Indication		-
Voltage	V dc	1..250
Voltage	V ac	1..250
Max Current	A	10
Varistor (*)	V	-
Protection		IP 67
Temperature	°C	-25..+125
Max section	mm2	1,5

Crimp terminals are sold separately  
(See on page 4-8)

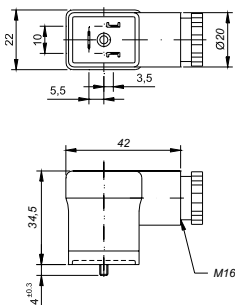
### VE1C Style B Industrial type



Circuit Code		00A0
Poles		-
Indication		-
Voltage	V dc	1..250
Voltage	V ac	1..250
Max Current	A	10
Varistor (*)	V	-
Protection		IP 67
Temperature	°C	-25..+125
Max section	mm2	1,5

Crimp terminals are sold separately  
(See on page 4-8)

### VF1C Style B EN and DIN standard



Circuit Code		00A0
Poles		-
Indication		-
Voltage	V dc	1..250
Voltage	V ac	1..250
Max Current	A	10
Varistor (*)	V	-
Protection		IP 67
Temperature	°C	-25..+125
Max section	mm2	1,5

Crimp terminals are sold separately  
(See on page 4-8)

# ELECTROVALVE CONNECTORS EN175301-803 (EX DIN 43650)

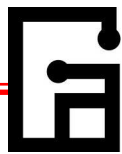
## ACCESSORIES

### Crimp terminals



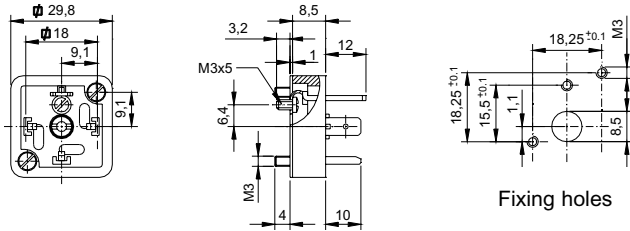
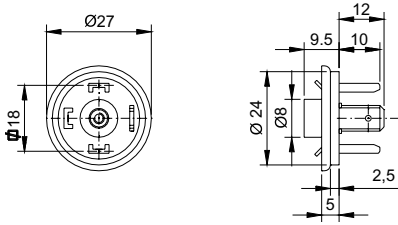
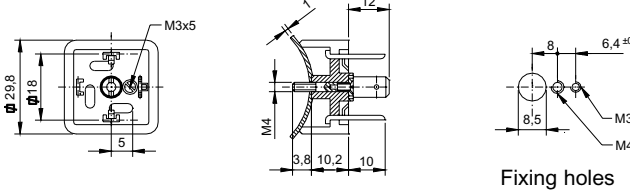
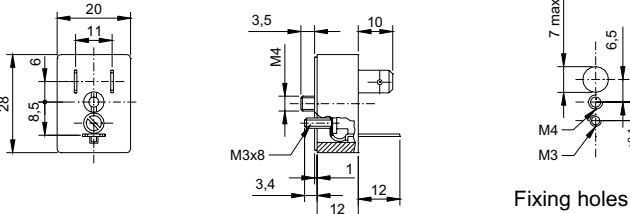
Code	1403	1404
Material	brass	brass
Package	reel	bulk
Quantity	6000	1000
Connector VC1C	●	●
Connector VE1C	●	●
Connector VF1C	●	●

The reel is of 6,000 terminals  
Terminals in bulk packaged in bags  
of 1000 pcs



## ELECTROVALVE CONNECTORS EN175301-803 (EX DIN 43650)

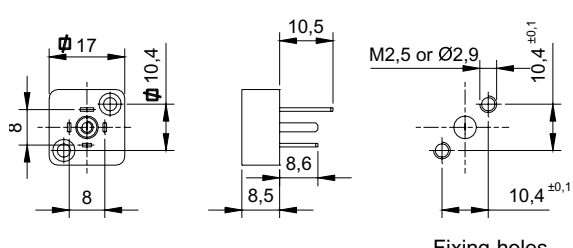
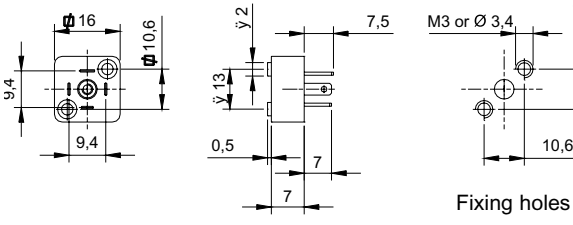
### STYLE A,B AND C - FOR FIXED PANEL

Characteristics				Description code			
Accessories included	Diameter	Poles number	Body	Circuit	Variant A		
 <p>Fixing holes</p>		2+1	VP11	02A	0S		
		3+1	VP11	03A	0S		
		2+1	VP12	02A	0S		
		3+1	VP12	03A	0S		
 <p>Fixing holes</p>	28...32	2+1	VP30	02A	0S		
		3+1	VP30	03A	0S		
	43...47	2+1	VP45	02A	0S		
		3+1	VP45	03A	0S		
	63...67	2+1	VP60	02A	0S		
		3+1	VP60	03A	0S		
 <p>Fixing holes</p>		2+1	VR11	02A	0S		

Common characteristics:  
 Nominal voltage: 250 V / 300 V  
 Max wire size: 1 mm<sup>2</sup>  
 Material: polyamide 30% glassed filled

# ELECTROVALVE CONNECTORS EN175301-803 (EX DIN 43650)

STYLE A,B AND C - FOR FIXED PANEL

Characteristics				Description code		
	Accessories included	Diameter	Poles number	Body	Circuit	Variant A
 <p>Fixing holes</p>	2 screws M2,5 x 8 1 gasket		2+1	VT11	02A	0S
			3+1	VT11	03A	0S
 <p>Fixing holes</p>	2 screws M3 x 8 1 gasket		2+1	VU11	02A	0S
			3+1	VU11	03A	0S

Common characteristics:  
 Nominal voltage: 250 V / 300 V  
 Max wire size: 0,75 mm<sup>2</sup>  
 Material: polyamide 30% glass filled